

# Shortleaf Pine

## Ground Floor



### Statistics

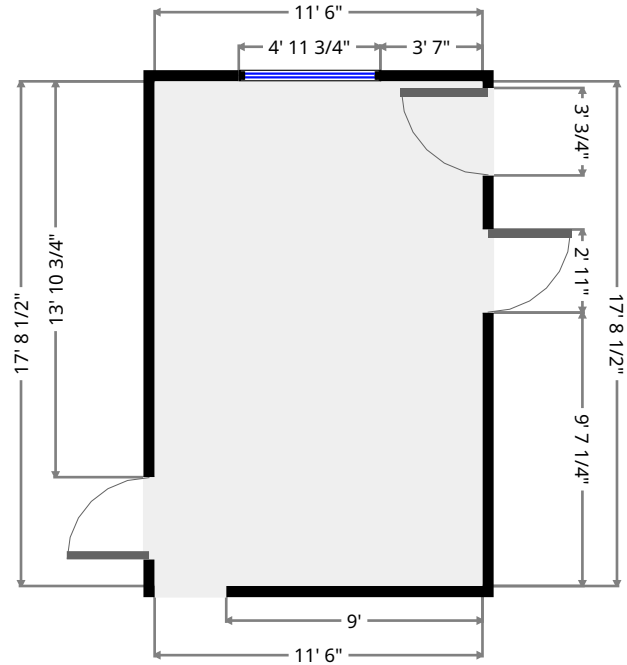
837 sq ft  
1 Floor  
2 Bedrooms  
2 Bathrooms

THIS FLOORPLAN IS PROVIDED WITHOUT WARRANTY OF ANY KIND. SENSOPIA DISCLAIMS ANY WARRANTY INCLUDING, WITHOUT LIMITATION, SATISFACTORY QUALITY OR ACCURACY OF DIMENSIONS.



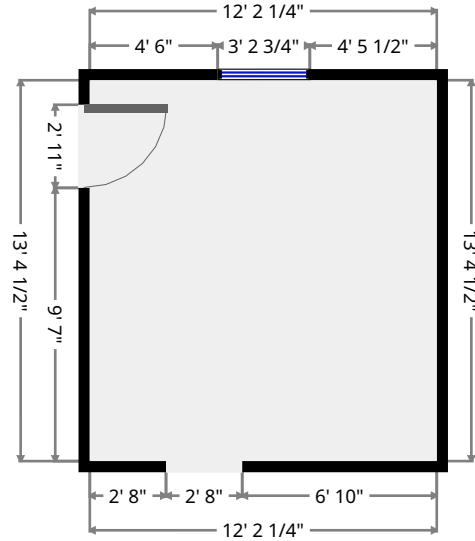
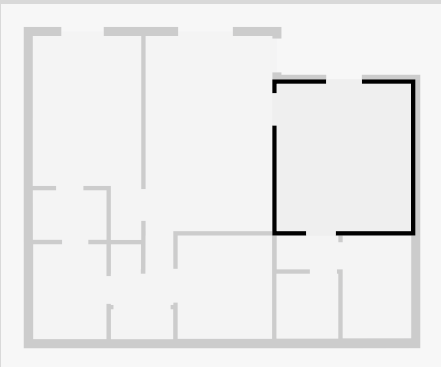
# Living Room

Width: 11' 6"  
 Length: 17' 8 1/2"  
 Area: 203.90 sq ft  
 Perimeter: 58' 5 1/2"  
 Ceiling Height: 7' 9 1/2"

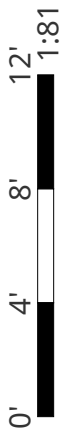


# Bedroom

Width: 12' 2 1/4"  
 Length: 13' 4 1/2"  
 Area: 162.87 sq ft  
 Perimeter: 51' 1 1/4"  
 Ceiling Height: 7' 9 1/2"

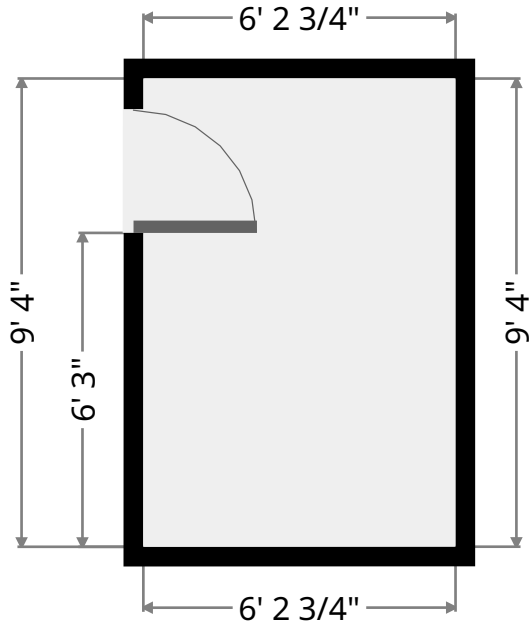
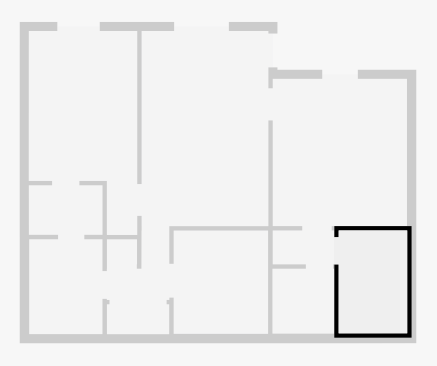


THIS FLOORPLAN IS PROVIDED WITHOUT WARRANTY OF ANY KIND. SENSOPIA DISCLAIMS ANY WARRANTY INCLUDING, WITHOUT LIMITATION, SATISFACTORY QUALITY OR ACCURACY OF DIMENSIONS.



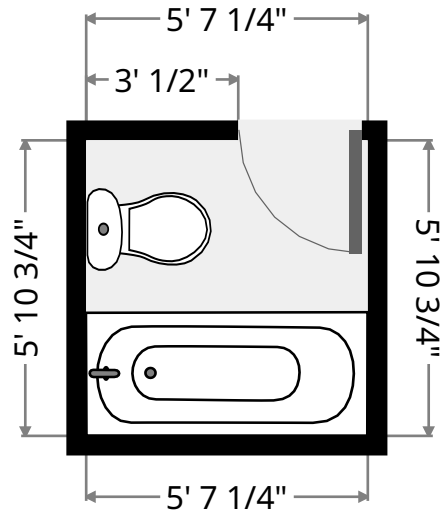
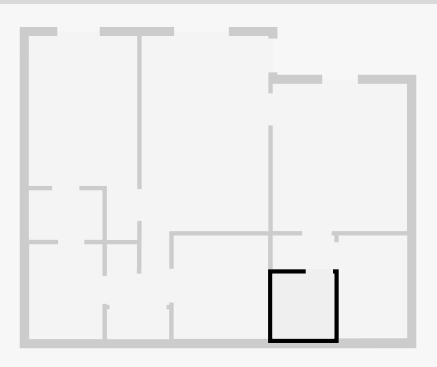
## Closet

Width: 6' 2 3/4"  
 Length: 9' 4"  
 Area: 58.09 sq ft  
 Perimeter: 31' 1 1/2"  
 Ceiling Height: 7' 9 1/2"

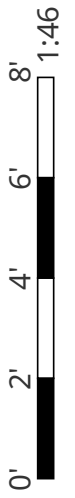


## Bathroom

Width: 5' 7 1/4"  
 Length: 5' 10 3/4"  
 Area: 33.08 sq ft  
 Perimeter: 23' 1/4"  
 Ceiling Height: 7' 9 1/2"

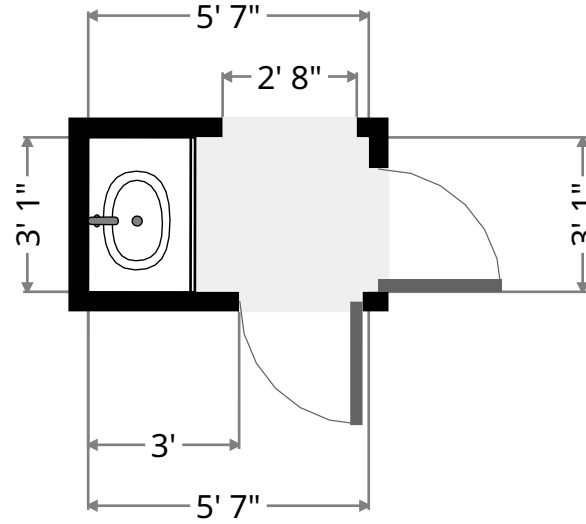
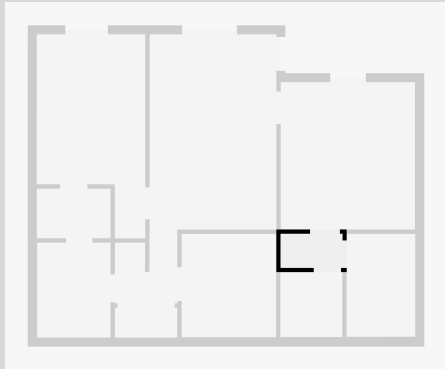


THIS FLOORPLAN IS PROVIDED WITHOUT WARRANTY OF ANY KIND. SENSOPIA DISCLAIMS ANY WARRANTY INCLUDING, WITHOUT LIMITATION, SATISFACTORY QUALITY OR ACCURACY OF DIMENSIONS.



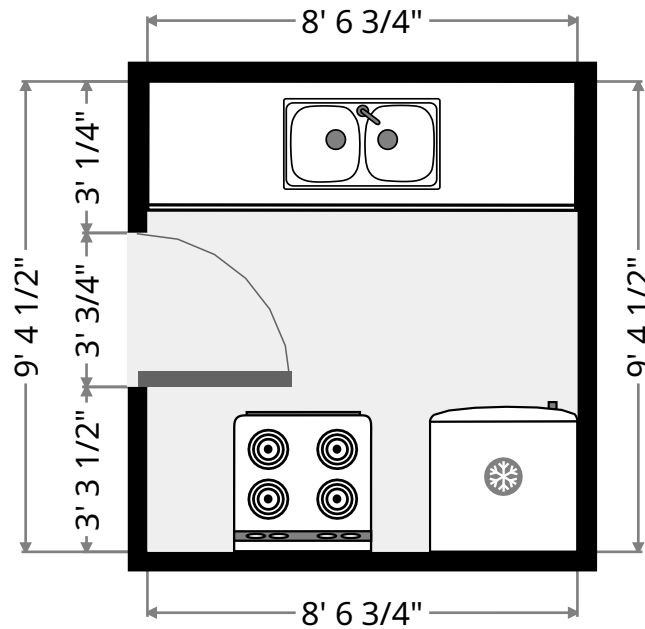
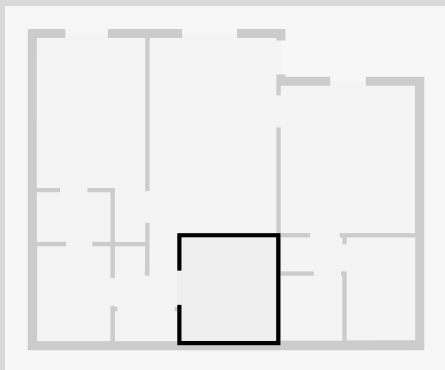
## Hall

Width: 3' 1"  
 Length: 5' 7"  
 Area: 17.22 sq ft  
 Perimeter: 17' 4"

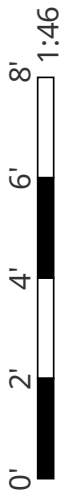


## Kitchen

Width: 8' 6 3/4"  
 Length: 9' 4 1/2"  
 Area: 80.39 sq ft  
 Perimeter: 35' 10 3/4"  
 Ceiling Height: 7' 9 1/2"

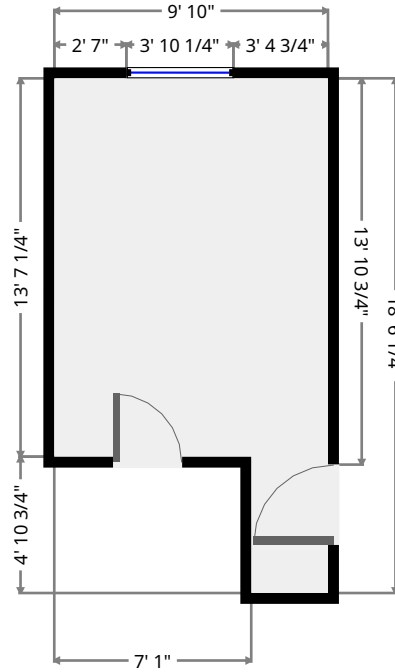
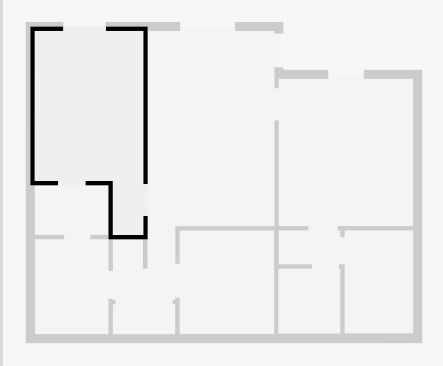


THIS FLOORPLAN IS PROVIDED WITHOUT WARRANTY OF ANY KIND. SENSOPIA DISCLAIMS ANY WARRANTY INCLUDING, WITHOUT LIMITATION, SATISFACTORY QUALITY OR ACCURACY OF DIMENSIONS.



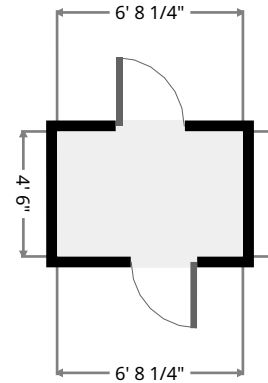
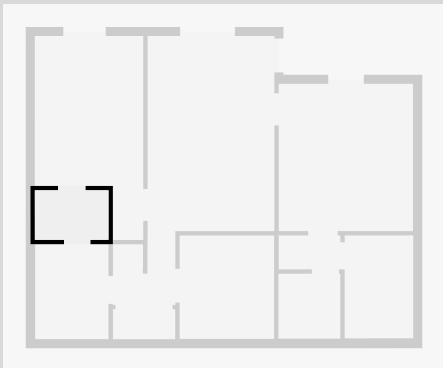
## Bedroom

Width: 9' 10"  
 Length: 18' 6 1/4"  
 Area: 147.53 sq ft  
 Perimeter: 56' 8 1/2"  
 Ceiling Height: 7' 9 1/2"

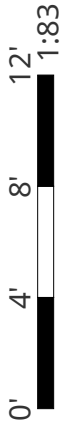


## Closet

Width: 4' 6"  
 Length: 6' 8 1/4"  
 Area: 30.06 sq ft  
 Perimeter: 22' 4 1/4"  
 Ceiling Height: 7' 9 1/2"

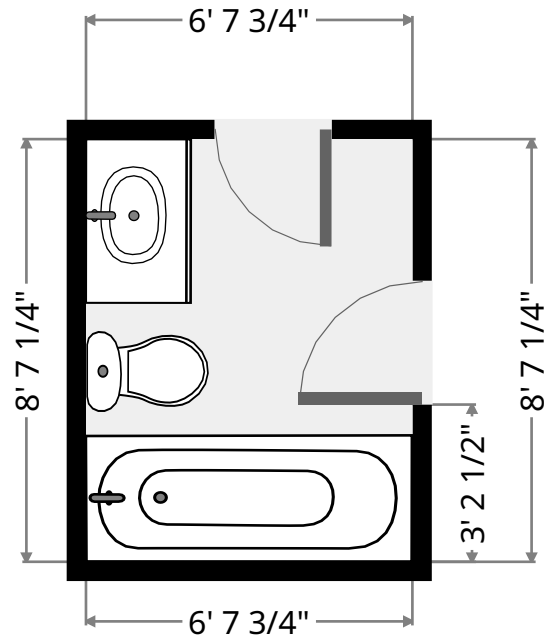


THIS FLOORPLAN IS PROVIDED WITHOUT WARRANTY OF ANY KIND. SENSOPIA DISCLAIMS ANY WARRANTY INCLUDING, WITHOUT LIMITATION, SATISFACTORY QUALITY OR ACCURACY OF DIMENSIONS.



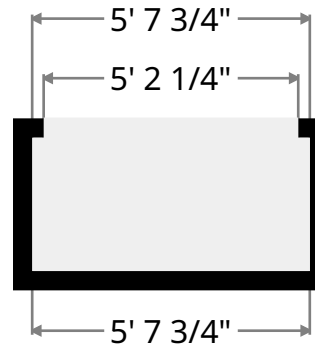
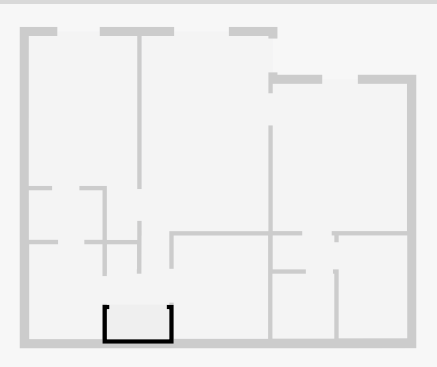
## Bathroom

Width: 6' 7 3/4"  
Length: 8' 7 1/4"  
Area: 57.25 sq ft  
Perimeter: 30' 6 1/4"  
Ceiling Height: 7' 9 1/2"



## Closet

Width: 2' 8 1/2"  
Length: 5' 7 3/4"  
Area: 15.36 sq ft  
Perimeter: 16' 9"  
Ceiling Height: 7' 9 1/2"

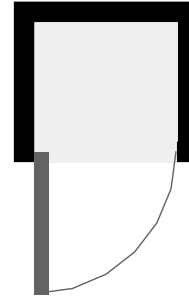
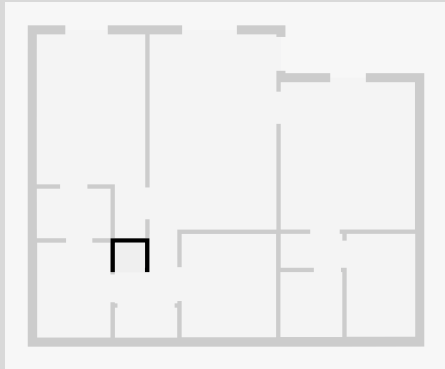


THIS FLOORPLAN IS PROVIDED WITHOUT WARRANTY OF ANY KIND. SENSOPIA DISCLAIMS ANY WARRANTY INCLUDING, WITHOUT LIMITATION, SATISFACTORY QUALITY OR ACCURACY OF DIMENSIONS.



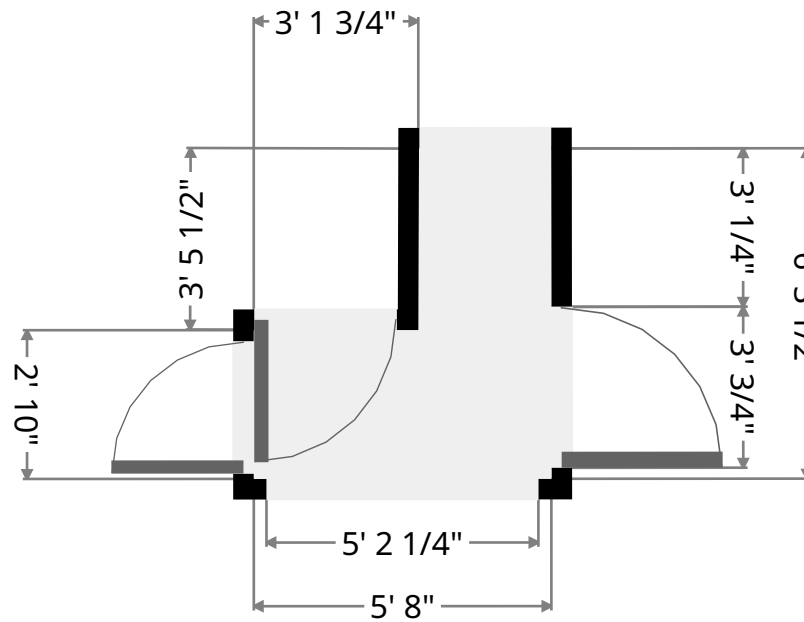
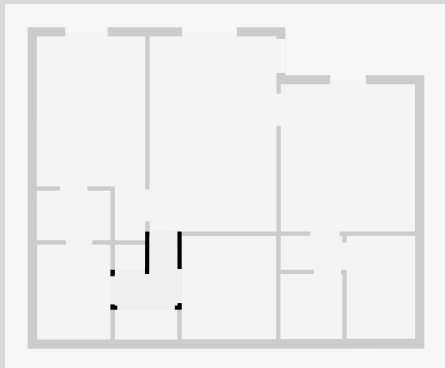
## Closet

Width: 2' 3 1/4"  
 Length: 2' 8 3/4"  
 Area: 6.21 sq ft  
 Perimeter: 10'



## Hall

Width: 5' 8"  
 Length: 6' 3 1/2"  
 Area: 24.85 sq ft  
 Perimeter: 23' 11 1/4"



THIS FLOORPLAN IS PROVIDED WITHOUT WARRANTY OF ANY KIND. SENSOPIA DISCLAIMS ANY WARRANTY INCLUDING, WITHOUT LIMITATION, SATISFACTORY QUALITY OR ACCURACY OF DIMENSIONS.

