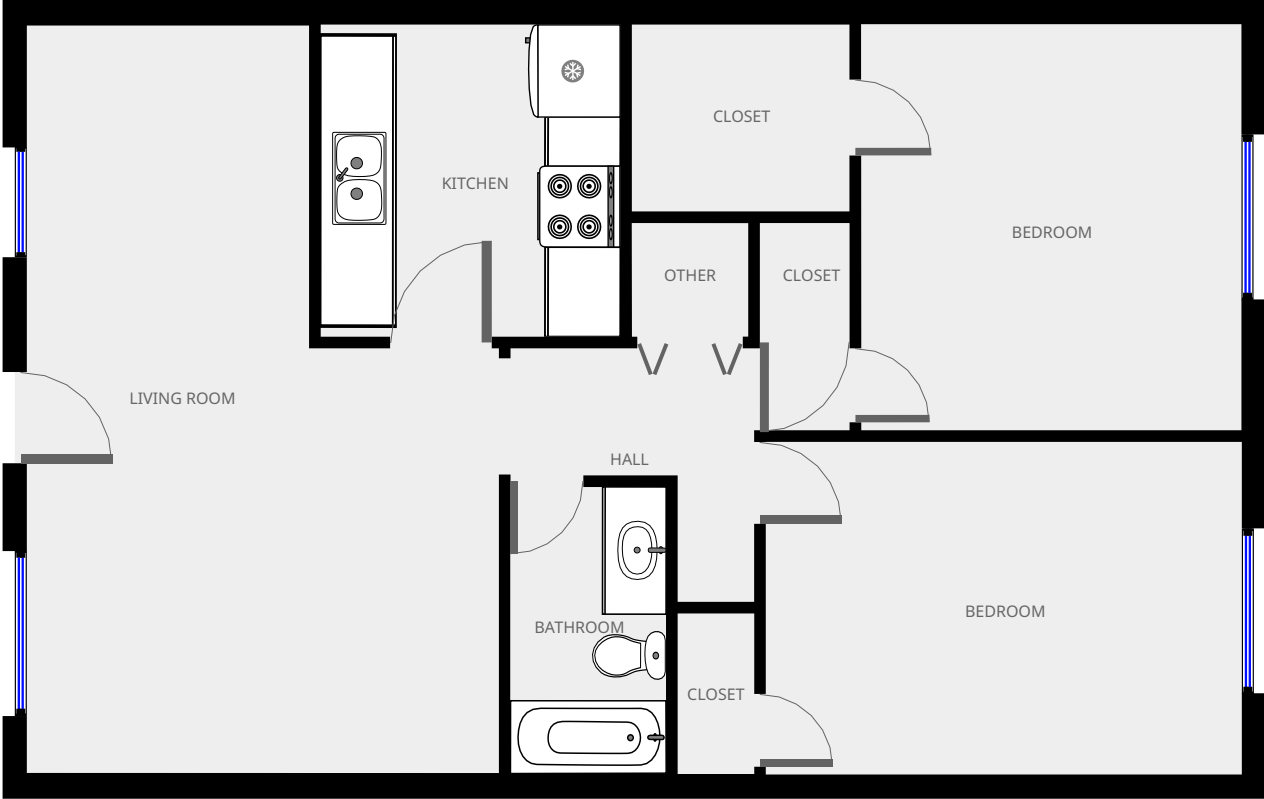


# Ponderosa Pine

## Ground Floor



### Statistics

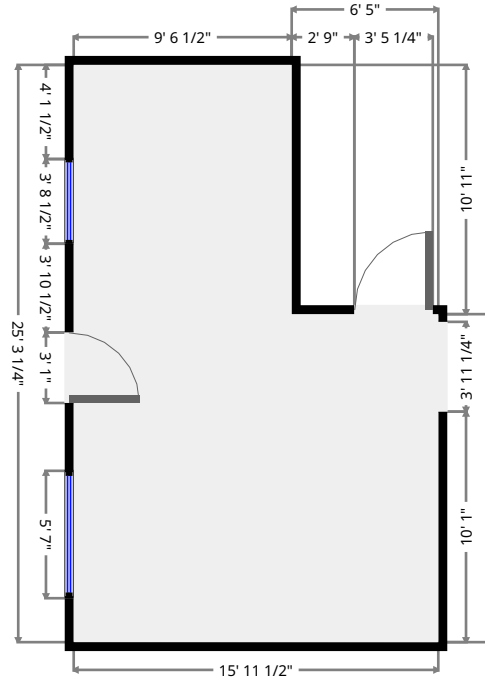
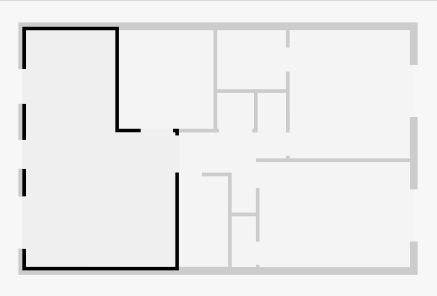
- 991 sq ft
- 1 Floor
- 2 Bedrooms
- 1 Bathroom

THIS FLOORPLAN IS PROVIDED WITHOUT WARRANTY OF ANY KIND. SENSOPIA DISCLAIMS ANY WARRANTY INCLUDING, WITHOUT LIMITATION, SATISFACTORY QUALITY OR ACCURACY OF DIMENSIONS.



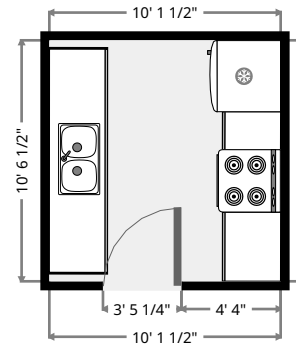
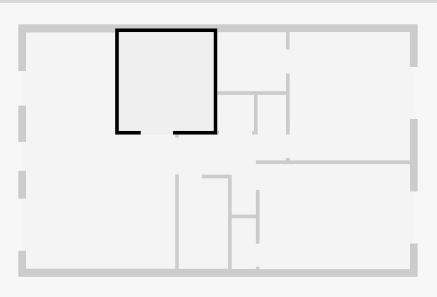
# Living Room

Width: 15' 11 1/2"  
 Length: 25' 3 1/4"  
 Area: 333.27 sq ft  
 Perimeter: 82' 5 1/2"  
 Ceiling Height: 7' 9 1/2"



# Kitchen

Width: 10' 1 1/2"  
 Length: 10' 6 1/2"  
 Area: 106.81 sq ft  
 Perimeter: 41' 4 1/4"  
 Ceiling Height: 7' 9 1/2"

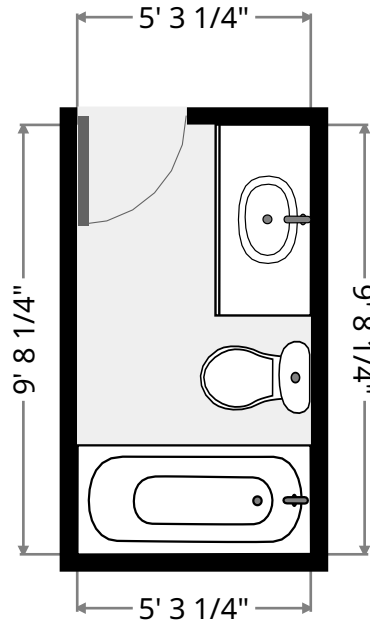
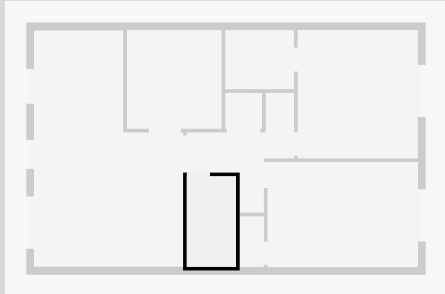


THIS FLOORPLAN IS PROVIDED WITHOUT WARRANTY OF ANY KIND. SENSOPIA DISCLAIMS ANY WARRANTY INCLUDING, WITHOUT LIMITATION, SATISFACTORY QUALITY OR ACCURACY OF DIMENSIONS.



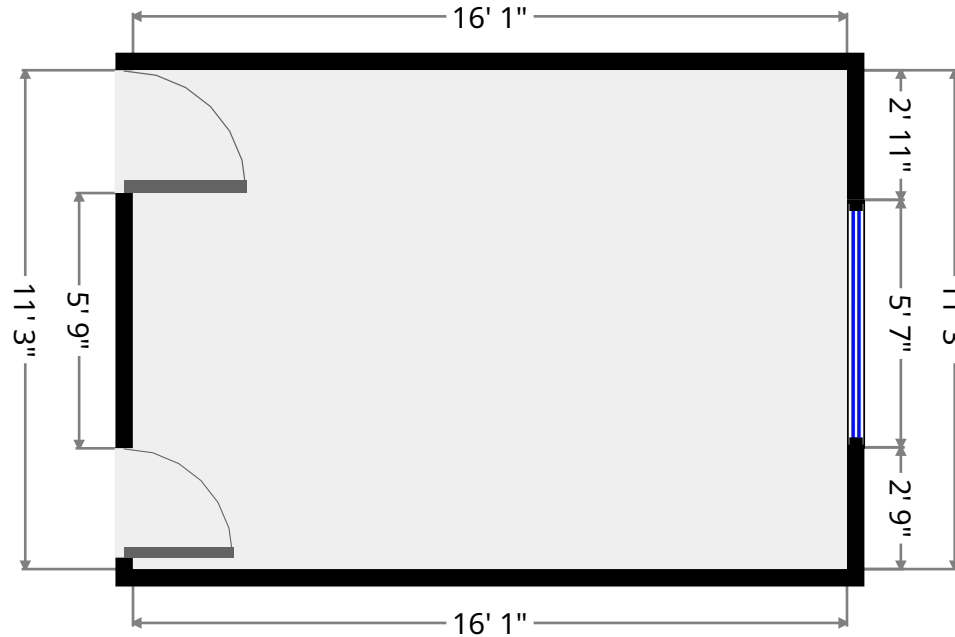
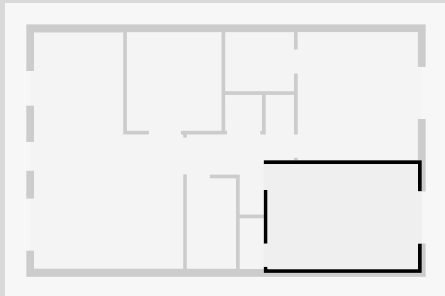
## Bathroom

Width: 5' 3 1/4"  
 Length: 9' 8 1/4"  
 Area: 50.94 sq ft  
 Perimeter: 29' 10 1/2"  
 Ceiling Height: 7' 9 1/2"



## Bedroom

Width: 11' 3"  
 Length: 16' 1"  
 Area: 180.92 sq ft  
 Perimeter: 54' 8"  
 Ceiling Height: 7' 9 1/2"

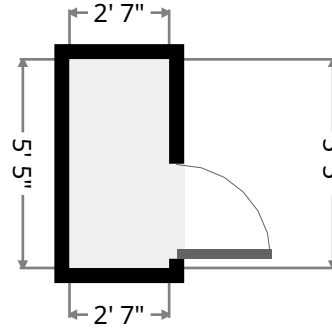
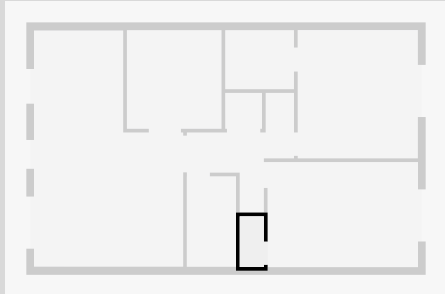


THIS FLOORPLAN IS PROVIDED WITHOUT WARRANTY OF ANY KIND. SENSOPIA DISCLAIMS ANY WARRANTY INCLUDING, WITHOUT LIMITATION, SATISFACTORY QUALITY OR ACCURACY OF DIMENSIONS.



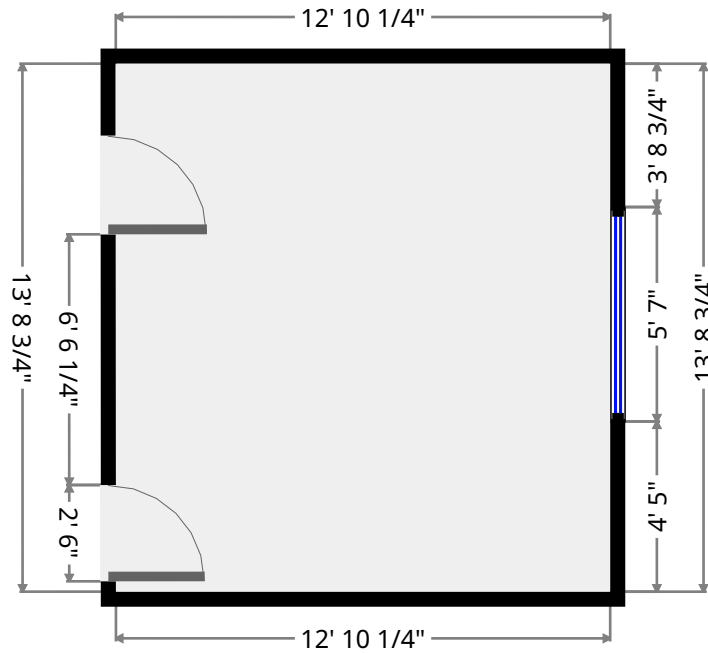
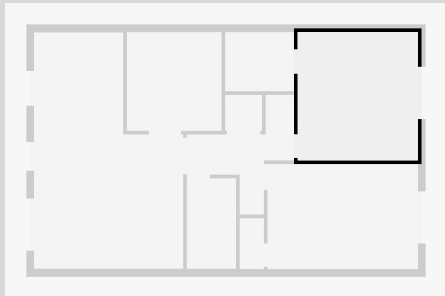
## Closet

Width: 2' 7"  
 Length: 5' 5"  
 Area: 14.05 sq ft  
 Perimeter: 16' 1/2"  
 Ceiling Height: 7' 9 1/2"



## Bedroom

Width: 12' 10 1/4"  
 Length: 13' 8 3/4"  
 Area: 176.50 sq ft  
 Perimeter: 53' 2"  
 Ceiling Height: 7' 9 1/2"

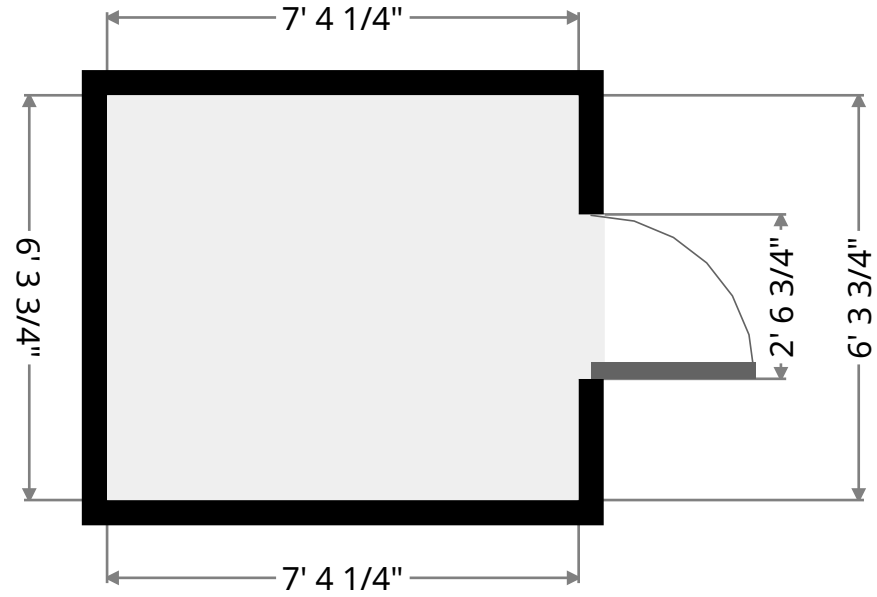
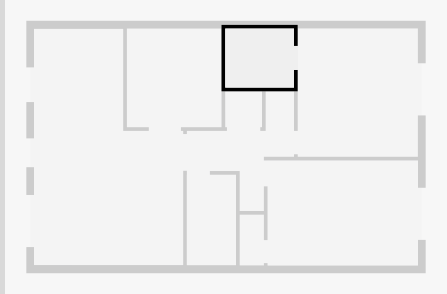


THIS FLOORPLAN IS PROVIDED WITHOUT WARRANTY OF ANY KIND. SENSOPIA DISCLAIMS ANY WARRANTY INCLUDING, WITHOUT LIMITATION, SATISFACTORY QUALITY OR ACCURACY OF DIMENSIONS.



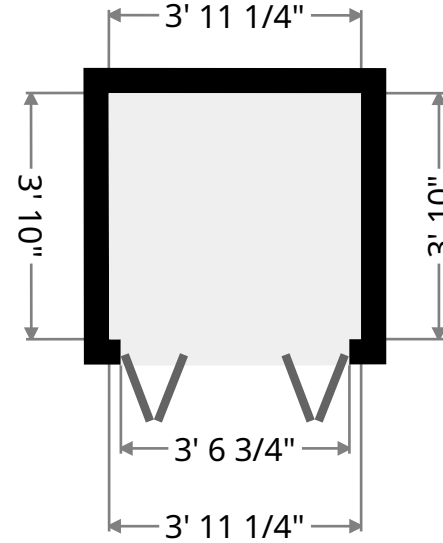
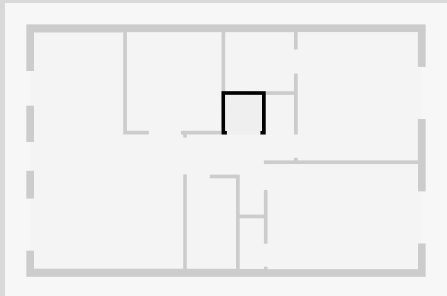
## Closet

Width: 6' 3 3/4"  
 Length: 7' 4 1/4"  
 Area: 46.47 sq ft  
 Perimeter: 27' 4 1/4"

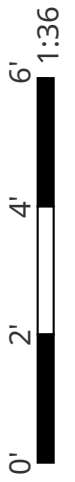


## Other

Width: 3' 10"  
 Length: 3' 11 1/4"  
 Area: 15.11 sq ft  
 Perimeter: 15' 6 1/2"  
 Ceiling Height: 7' 9 1/2"

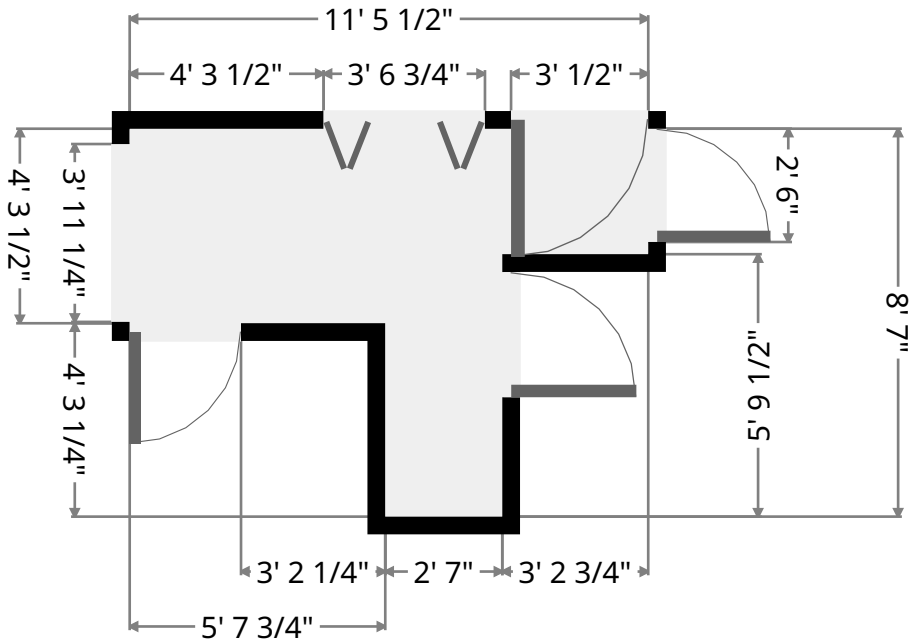
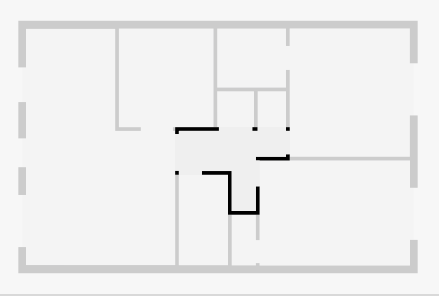


THIS FLOORPLAN IS PROVIDED WITHOUT WARRANTY OF ANY KIND. SENSOPIA DISCLAIMS ANY WARRANTY INCLUDING, WITHOUT LIMITATION, SATISFACTORY QUALITY OR ACCURACY OF DIMENSIONS.



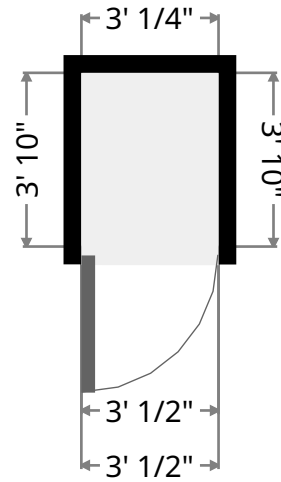
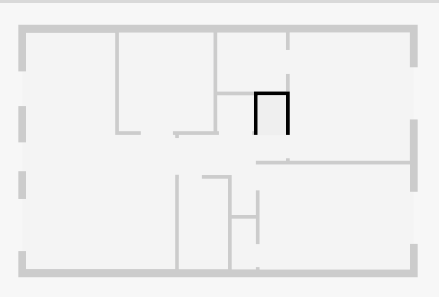
# Hall

Width: 8' 7"  
 Length: 11' 5 1/2"  
 Area: 55.43 sq ft  
 Perimeter: 40' 1"



# Closet

Width: 3' 1/2"  
 Length: 3' 10"  
 Area: 11.64 sq ft  
 Perimeter: 13' 9"



THIS FLOORPLAN IS PROVIDED WITHOUT WARRANTY OF ANY KIND. SENSOPIA DISCLAIMS ANY WARRANTY INCLUDING, WITHOUT LIMITATION, SATISFACTORY QUALITY OR ACCURACY OF DIMENSIONS.

