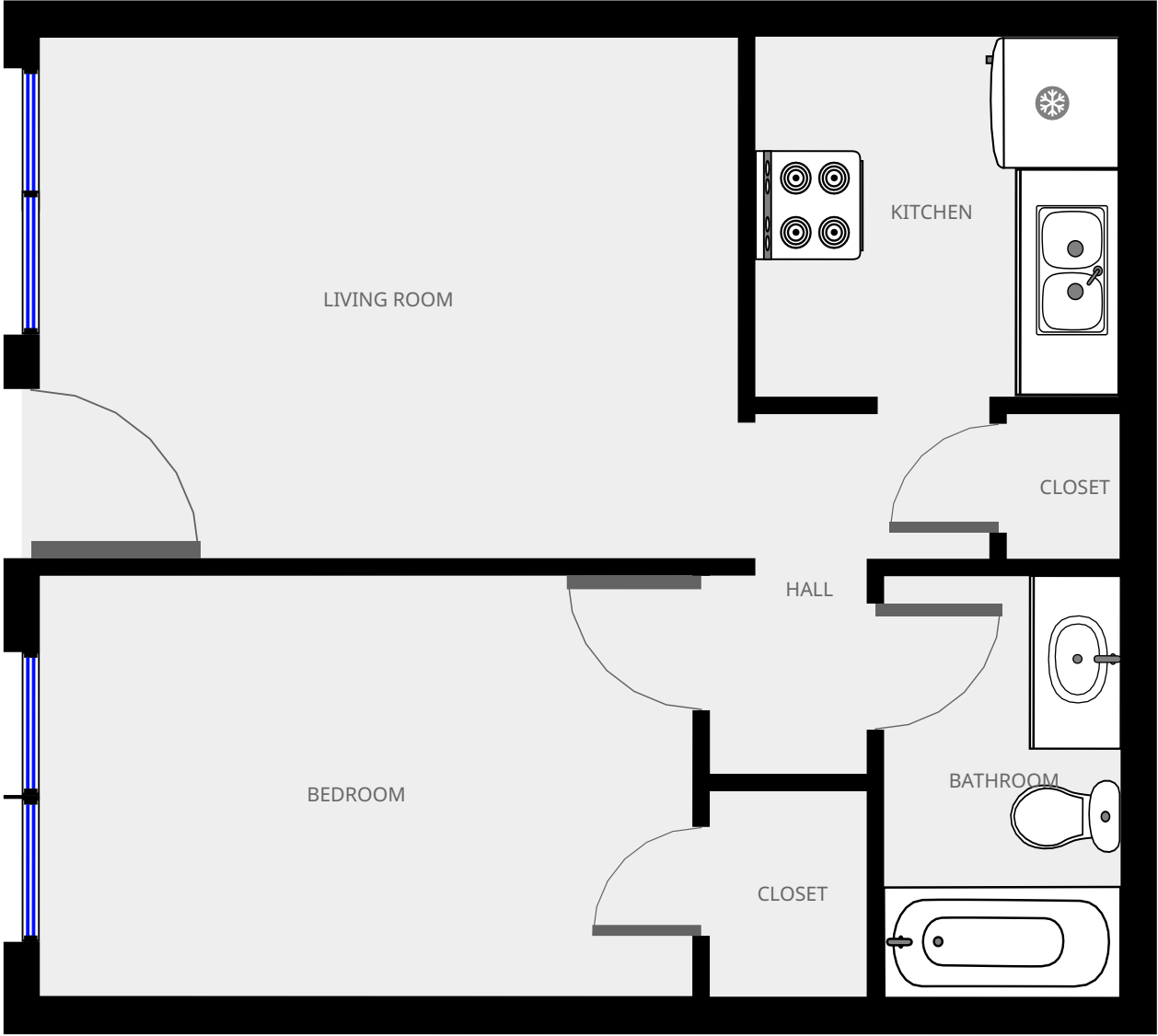


# Sugar Pine

## Ground Floor



**Statistics**

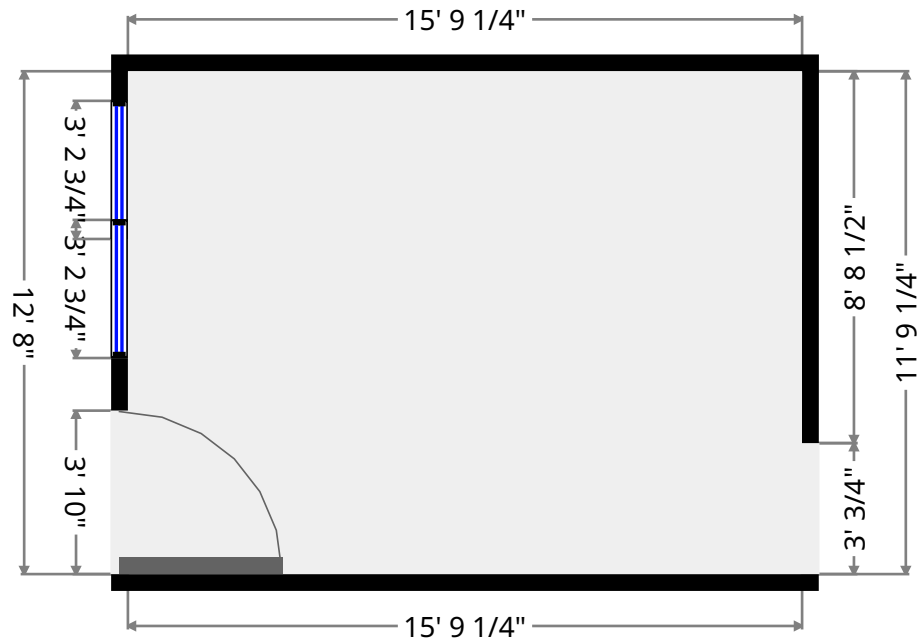
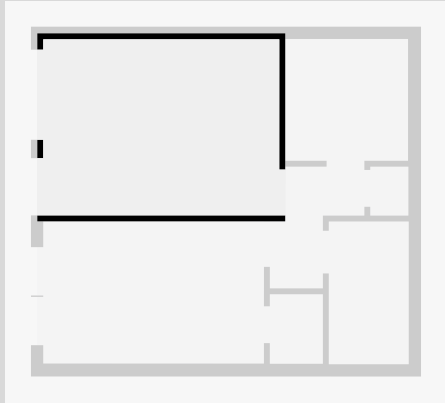
- 503 sq ft
- 1 Floor
- 1 Bedroom
- 1 Bathroom

THIS FLOORPLAN IS PROVIDED WITHOUT WARRANTY OF ANY KIND. SENSOPIA DISCLAIMS ANY WARRANTY INCLUDING, WITHOUT LIMITATION, SATISFACTORY QUALITY OR ACCURACY OF DIMENSIONS.



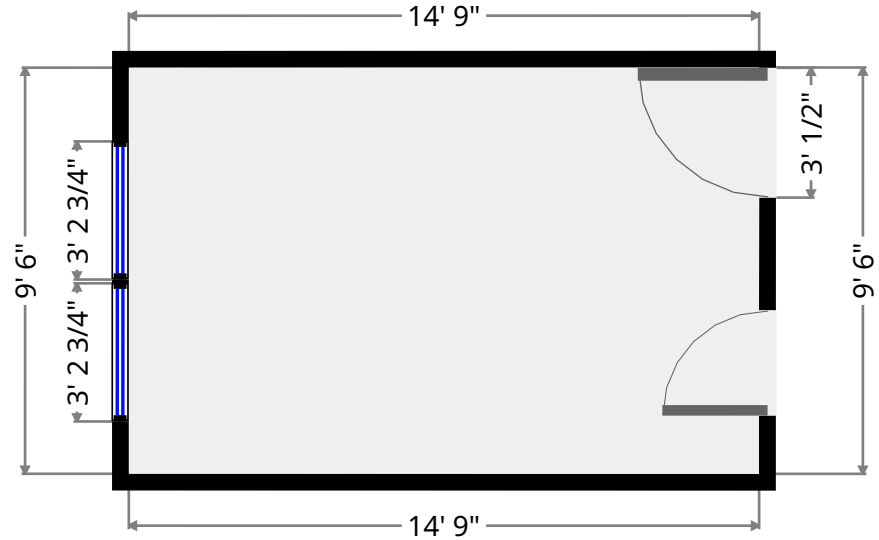
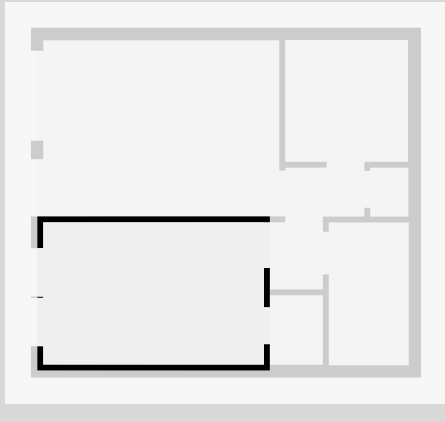
## Living Room

Width: 11' 9 1/4"  
 Length: 15' 9 1/4"  
 Area: 185.70 sq ft  
 Perimeter: 55' 1 1/4"  
 Ceiling Height: 7' 9 1/2"



## Bedroom

Width: 9' 6"  
 Length: 14' 9"  
 Area: 140.26 sq ft  
 Perimeter: 48' 6 1/4"  
 Ceiling Height: 7' 9 1/2"

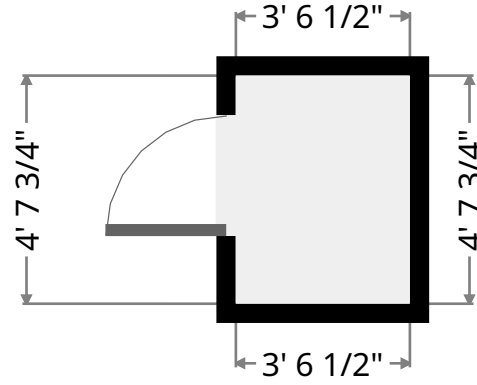
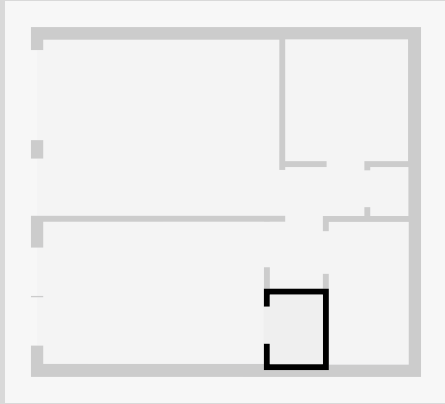


THIS FLOORPLAN IS PROVIDED WITHOUT WARRANTY OF ANY KIND. SENSOPIA DISCLAIMS ANY WARRANTY INCLUDING, WITHOUT LIMITATION, SATISFACTORY QUALITY OR ACCURACY OF DIMENSIONS.



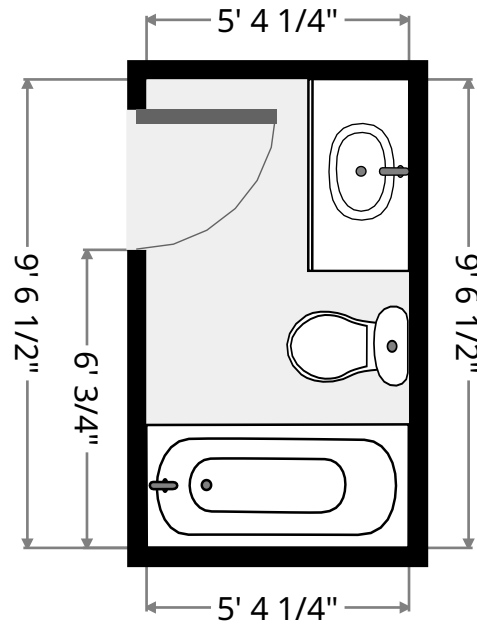
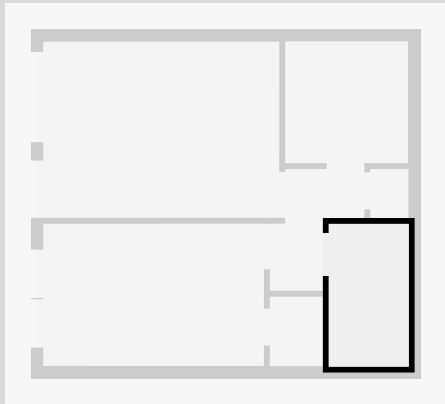
## Closet

Width: 3' 6 1/2"  
Length: 4' 7 3/4"  
Area: 16.47 sq ft  
Perimeter: 16' 4 1/2"



## Bathroom

Width: 5' 4 1/4"  
Length: 9' 6 1/2"  
Area: 51.01 sq ft  
Perimeter: 29' 9 1/4"

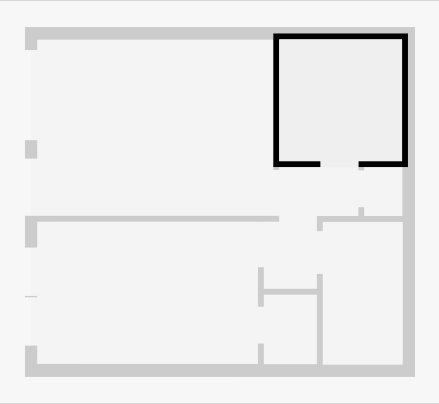


THIS FLOORPLAN IS PROVIDED WITHOUT WARRANTY OF ANY KIND. SENSOPIA DISCLAIMS ANY WARRANTY INCLUDING, WITHOUT LIMITATION, SATISFACTORY QUALITY OR ACCURACY OF DIMENSIONS.



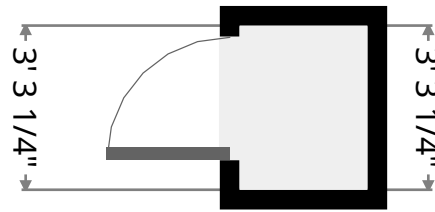
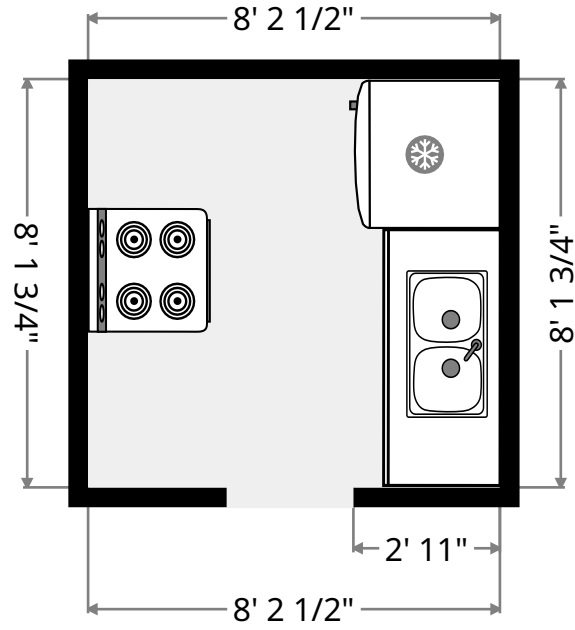
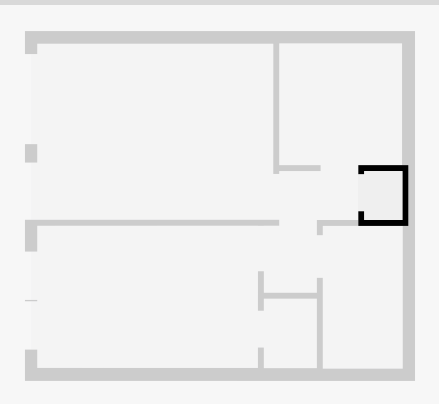
# Kitchen

Width: 8' 1 3/4"  
Length: 8' 2 1/2"  
Area: 66.84 sq ft  
Perimeter: 32' 8 1/2"



# Closet

Width: 2' 6 1/2"  
Length: 3' 3 1/4"  
Area: 8.34 sq ft  
Perimeter: 11' 7 3/4"

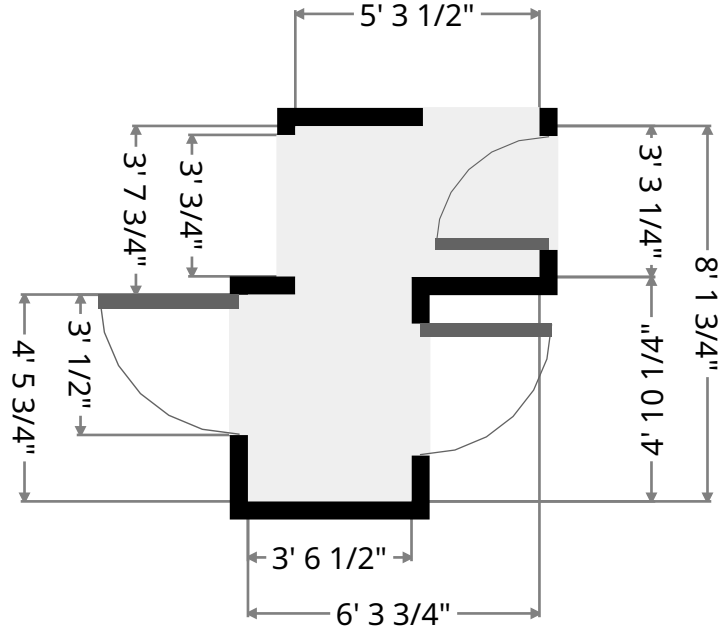
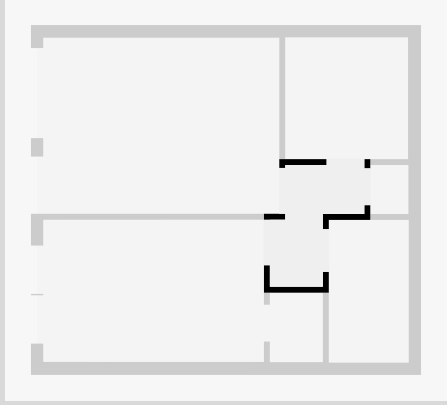


THIS FLOORPLAN IS PROVIDED WITHOUT WARRANTY OF ANY KIND. SENSOPIA DISCLAIMS ANY WARRANTY INCLUDING, WITHOUT LIMITATION, SATISFACTORY QUALITY OR ACCURACY OF DIMENSIONS.



# Hall

Width: 6' 3 3/4"  
Length: 8' 1 3/4"  
Area: 34.16 sq ft  
Perimeter: 28' 10 3/4"



THIS FLOORPLAN IS PROVIDED WITHOUT WARRANTY OF ANY KIND. SENSOPIA DISCLAIMS ANY WARRANTY INCLUDING, WITHOUT LIMITATION, SATISFACTORY QUALITY OR ACCURACY OF DIMENSIONS.